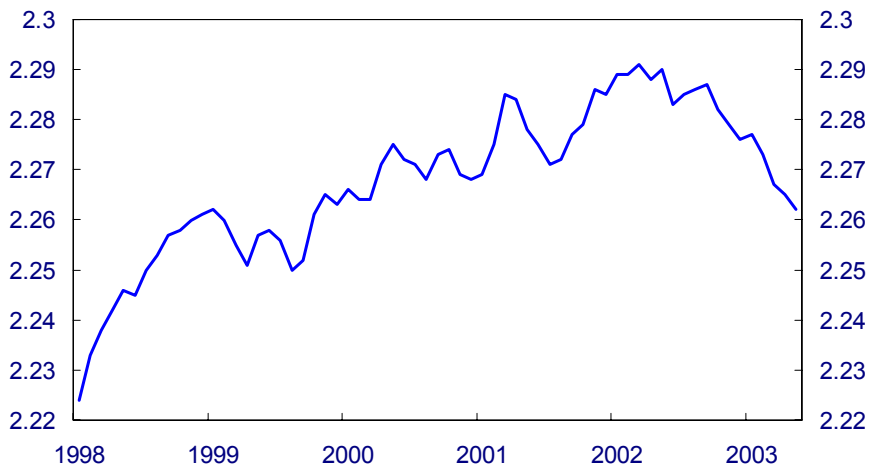


# Chapter 4

## The labour market

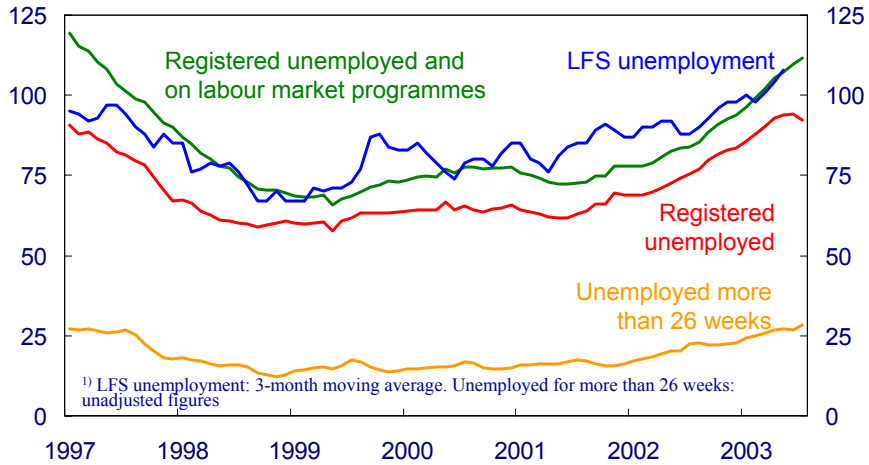
### 4.1 Numbers employed according to LFS

In millions. Seasonally adjusted



Source: Statistics Norway

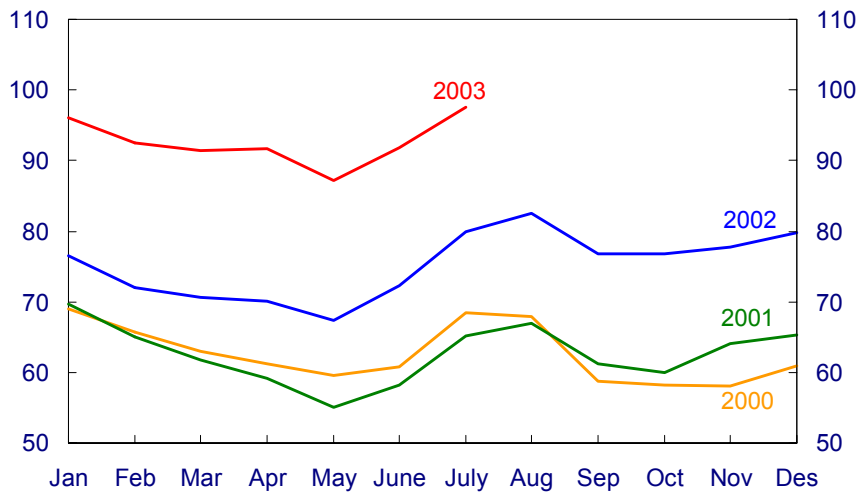
### 4.2 Number of unemployed (LFS), number of registered unemployed and persons on labour market programmes. In thousands. Seasonally adjusted<sup>1)</sup>



Sources: Statistics Norway and the Directorate of Labour

Executive Board August 2003

### 4.3 Registered unemployment Unadjusted. In thousands

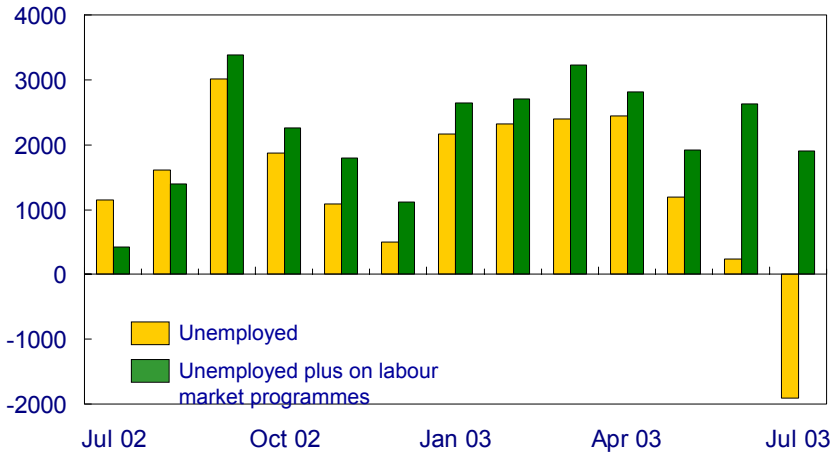


Source: Directorate of Labour

Executive Board August 2003

### 4.4 Change in number of unemployed on previous month

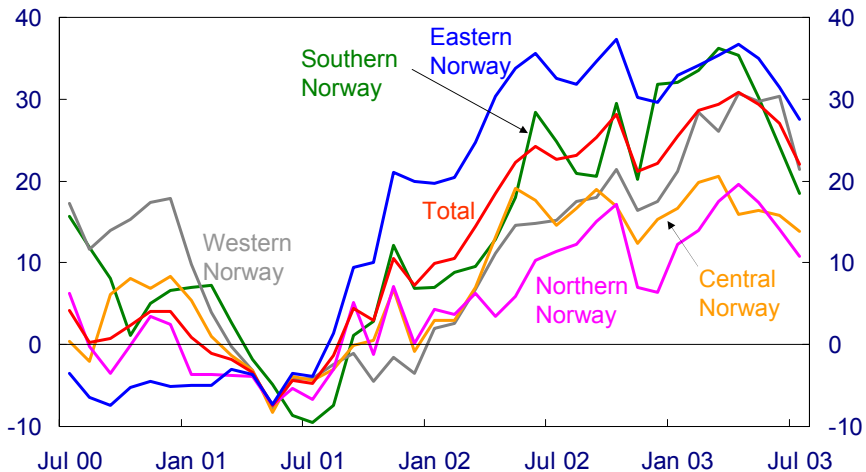
Unemployed and unemployed plus on labour market programmes.  
Seasonally adjusted.



Source: Directorate of Labour

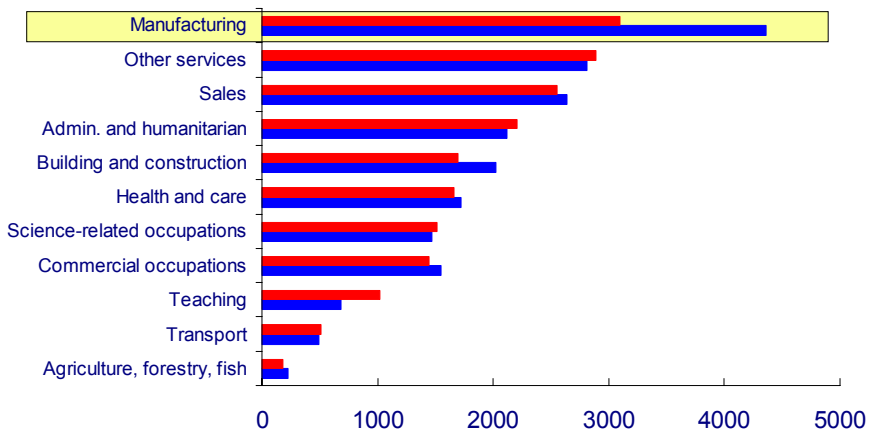
### 4.5 Change in unemployment per region.

Percentage rise on same month previous year. July 00-July 03



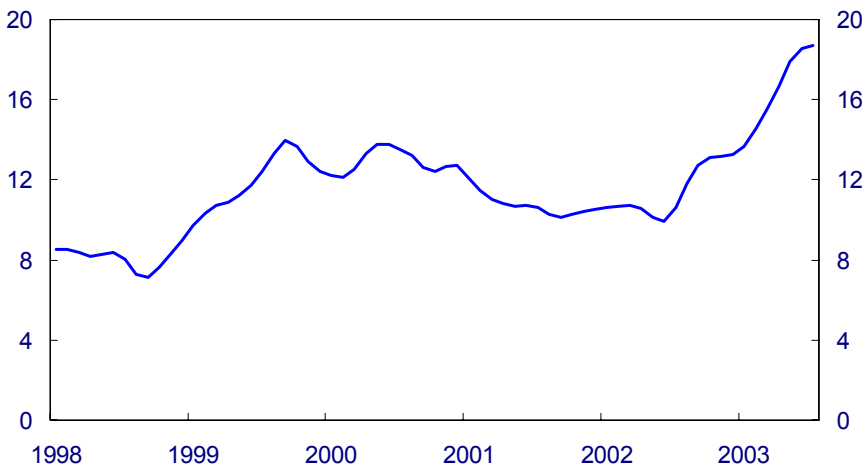
Source: Directorate of Labour

### 4.6 Change in unemployment by occupational group<sup>1)</sup> June 2002 - June 2003 (blue) and July 2002 - July 2003 (red)



<sup>1)</sup> In addition the item "specified / no occupational background" has fallen by 1160 persons,  
 Source: Directorate of Labour

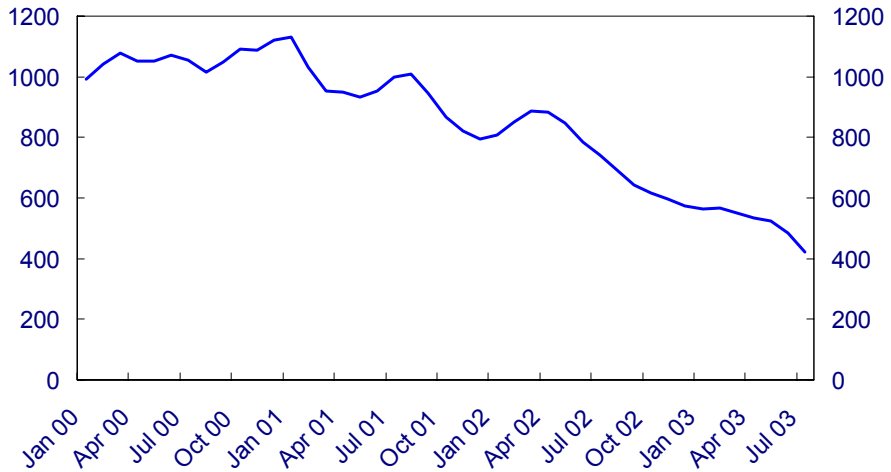
### 4.7 Number laid off In 1000s. Trend



Source: Directorate of Labour

## 4.8 Supply of job vacancies advertised only in the media (per business day)

Trend



Source: Directorate of Labour