

Credit Conditions and the Effects of Economic Shocks: Amplification and Asymmetries

Ana Beatriz Galvão, Andrea Carriero and Massimiliano Marcellino

University of Warwick, Queen Mary University of London, Bocconi and CEPR

January 2018

In this paper, we

- introduce the Smooth Transition Multivariate Autoregressive Index model: nonlinear dynamics in VAR models with a large set (20) of endogenous variables.

In this paper, we

- introduce the Smooth Transition Multivariate Autoregressive Index model: nonlinear dynamics in VAR models with a large set (20) of endogenous variables.
- address a set of empirical research questions related to *credit conditions*:

In this paper, we

- introduce the Smooth Transition Multivariate Autoregressive Index model: nonlinear dynamics in VAR models with a large set (20) of endogenous variables.
 - address a set of empirical research questions related to *credit conditions*:
- 1 Do they change the dynamic interactions of economic variables by characterizing different regimes?

In this paper, we

- introduce the Smooth Transition Multivariate Autoregressive Index model: nonlinear dynamics in VAR models with a large set (20) of endogenous variables.
- address a set of empirical research questions related to *credit conditions*:
 - 1 Do they change the dynamic interactions of economic variables by characterizing different regimes?
 - 2 Do they amplify the effects of structural economic shocks?

In this paper, we

- introduce the Smooth Transition Multivariate Autoregressive Index model: nonlinear dynamics in VAR models with a large set (20) of endogenous variables.
- address a set of empirical research questions related to *credit conditions*:
 - ① Do they change the dynamic interactions of economic variables by characterizing different regimes?
 - ② Do they amplify the effects of structural economic shocks?
 - ③ Do they generate asymmetries in the effects of shocks depending on the size/sign of the shock?

Why Smooth Transition VARs?

- The transmission of shocks may change over business cycle regimes:

Why Smooth Transition VARs?

- The transmission of shocks may change over business cycle regimes:
 - ① responses to monetary policy shocks (Weise, 1999);

Why Smooth Transition VARs?

- The transmission of shocks may change over business cycle regimes:
 - ① responses to monetary policy shocks (Weise, 1999);
 - ② the fiscal multiplier (Auerback and Goridnichenko, 2012);

Why Smooth Transition VARs?

- The transmission of shocks may change over business cycle regimes:
 - ① responses to monetary policy shocks (Weise, 1999);
 - ② the fiscal multiplier (Auerback and Goridnichenko, 2012);
 - ③ the effect of uncertainty on unemployment changes (Caggiano et al, 2014).

Why Smooth Transition VARs?

- The transmission of shocks may change over business cycle regimes:
 - ① responses to monetary policy shocks (Weise, 1999);
 - ② the fiscal multiplier (Auerback and Goridnichenko, 2012);
 - ③ the effect of uncertainty on unemployment changes (Caggiano et al, 2014).
- Smooth Transition models are able to provide empirical evidence of amplification effects as suggested by financial friction models (Kirshnamurthy, 2010).

Why Smooth Transition VARs?

- The transmission of shocks may change over business cycle regimes:
 - ① responses to monetary policy shocks (Weise, 1999);
 - ② the fiscal multiplier (Auerback and Goridnichenko, 2012);
 - ③ the effect of uncertainty on unemployment changes (Caggiano et al, 2014).
- Smooth Transition models are able to provide empirical evidence of amplification effects as suggested by financial friction models (Kirshnamurthy, 2010).
- Evidence of amplification due to financial stress:

Why Smooth Transition VARs?

- The transmission of shocks may change over business cycle regimes:
 - ① responses to monetary policy shocks (Weise, 1999);
 - ② the fiscal multiplier (Auerback and Goridnichenko, 2012);
 - ③ the effect of uncertainty on unemployment changes (Caggiano et al, 2014).
- Smooth Transition models are able to provide empirical evidence of amplification effects as suggested by financial friction models (Kirshnamurthy, 2010).
- Evidence of amplification due to financial stress:
 - ① credit-based financial stress shocks have strong effects on inflation during high-stress regimes (Galvao and Owyang, 2017).

Why Smooth Transition VARs?

- The transmission of shocks may change over business cycle regimes:
 - ① responses to monetary policy shocks (Weise, 1999);
 - ② the fiscal multiplier (Auerback and Goridnichenko, 2012);
 - ③ the effect of uncertainty on unemployment changes (Caggiano et al, 2014).
- Smooth Transition models are able to provide empirical evidence of amplification effects as suggested by financial friction models (Kirshnamurthy, 2010).
- Evidence of amplification due to financial stress:
 - ① credit-based financial stress shocks have strong effects on inflation during high-stress regimes (Galvao and Owyang, 2017).
- Models are also used to check if positive and negative shocks of the same magnitude have asymmetric effects.

Why Smooth Transition VARs?

- The transmission of shocks may change over business cycle regimes:
 - ① responses to monetary policy shocks (Weise, 1999);
 - ② the fiscal multiplier (Auerback and Goridnichenko, 2012);
 - ③ the effect of uncertainty on unemployment changes (Caggiano et al, 2014).
- Smooth Transition models are able to provide empirical evidence of amplification effects as suggested by financial friction models (Kirshnamurthy, 2010).
- Evidence of amplification due to financial stress:
 - ① credit-based financial stress shocks have strong effects on inflation during high-stress regimes (Galvao and Owyang, 2017).
- Models are also used to check if positive and negative shocks of the same magnitude have asymmetric effects.
 - ① large negative shocks have larger effects during low growth regimes (Weise, 1999).

Why large VARs for structural analysis?

- One can compute informative responses (confidence bands are not too wide) to shocks in a large Bayesian VAR if shrinkage prior hyperparameters are estimated (Banbura, Giannone and Reichlin, 2010; Giannone, Lenza and Primiceri, 2015).

Why large VARs for structural analysis?

- One can compute informative responses (confidence bands are not too wide) to shocks in a large Bayesian VAR if shrinkage prior hyperparameters are estimated (Banbura, Giannone and Reichlin, 2010; Giannone, Lenza and Primiceri, 2015).
- The information set available to identify a structural shock may have an impact on the responses computed (Forni, Gambetti and Sala, 2014).

Why large VARs for structural analysis?

- One can compute informative responses (confidence bands are not too wide) to shocks in a large Bayesian VAR if shrinkage prior hyperparameters are estimated (Banbura, Giannone and Reichlin, 2010; Giannone, Lenza and Primiceri, 2015).
- The information set available to identify a structural shock may have an impact on the responses computed (Forni, Gambetti and Sala, 2014).
- One can employ a VAR with many different measures of economic activity and credit conditions (Gilchrist, Yankov and Zakrajsek, 2009).

Credit Conditions and the Macroeconomy

- Widening credit spreads lead to a decline in economic activity (Gilchrist and Zakrajsek (2012), Faust, Gilchrist, Wright and Zakrajsek (2013) and Lopez-Salido, Stein and Zakrajsek (2017));

Credit Conditions and the Macroeconomy

- Widening credit spreads lead to a decline in economic activity (Gilchrist and Zakrajsek (2012), Faust, Gilchrist, Wright and Zakrajsek (2013) and Lopez-Salido, Stein and Zakrajsek (2017));
- Because the empirical results above are based on linear models, there is no role for credit to act as a nonlinear propagator of shocks as in Balke (2000) and suggested by some DSGE models.

Credit Conditions and the Macroeconomy

- Widening credit spreads lead to a decline in economic activity (Gilchrist and Zakrajsek (2012), Faust, Gilchrist, Wright and Zakrajsek (2013) and Lopez-Salido, Stein and Zakrajsek (2017));
- Because the empirical results above are based on linear models, there is no role for credit to act as a nonlinear propagator of shocks as in Balke (2000) and suggested by some DSGE models.
- An exception based on the sign/size of *credit market shocks* using a projection approach is Barnichon, Matthes and Ziegenbein (2017).

Main Features of our Modelling Approach

- Dimensionality issues are sorted by using the Bayesian MAI approach as in Carriero, Kapetanios and Marcellino (2016a), and the use of the triangularization in Carriero, Clark and Marcellino (2016b).
- A small set of factors and common structural shocks drive the dynamics of the large set of variables.
- All elements of the variance-covariance matrix are allowed to change over regimes including the covariances (in contrast with the approach in Carriero, Clark and Marcellino (2016b)).
- The Bayesian estimation of all parameters in the smooth transition function relies on Lopes and Salazar (2005) and Galvao and Owyang (2017).

The MAI model

- Start with a VAR for the $N \times 1$ Y_t vector:

$$Y_t = \sum_{u=1}^p C_u Y_{t-u} + \varepsilon_t; \varepsilon_t \sim N(0, \Sigma).$$

- The MAI reduces the number of coefficients to estimate by assuming that Y_t is predicted by a small set of indices (Reinsel, 1983):

$$Y_t = \sum_{u=1}^p A_u B_0 Y_{t-u} + \varepsilon_t,$$

or

$$Y_t = \sum_{u=1}^p A_u F_{t-u} + \varepsilon_t,$$

where

$$F_t = B_0 Y_t$$

and B_0 is $R \times N$ where R is the number of indices/factors with one entry at each row of B_0 normalized to 1.

The ST-MAI model I

- Allow for regime changes as:

$$Y_t = \sum_{u=1}^p A_u F_{t-u} + \sum_{u=1}^p \Pi_t(\gamma, c, x_{t-1}) D_u F_{t-u} + \varepsilon_t,$$

where the transition function is

$$\Pi_t(\gamma, c, x_{t-1}) = \frac{1}{1 + \exp(-(\gamma/\sigma_x)(x_{t-1} - c))},$$

and one of the factors ($r = 1, \dots, R$) is employed as transition variable:

$$x_t = g_t^{(r)} = \frac{1}{12} \sum_{j=0}^{11} b_0^{(r)} Y_{t-j},$$

where we use Y on Y growth (monthly data) to get regimes of enough duration.

The ST-MAI model II

- Let the variance-covariance matrix to change over the regime as:

$$\begin{aligned} \text{var}(\varepsilon_t) &= \Sigma_t \\ \Sigma_t &= (1 - \Pi_t(\gamma, c, x_{t-1}))\Sigma_1 + \Pi_t(\gamma, c, x_{t-1})\Sigma_2. \end{aligned}$$

- Only few additional parameters are required to capture variance changes over time based on a time-varying weighted average. Regime-switching covariances may have a key role on the impulse response analysis.

Estimation I

- Gibbs sampling over four steps/blocks.
- ① Conditional on previous draws of $\Sigma_1^{(s-1)}, \Sigma_2^{(s-1)}, A^{(s-1)}$ and $B_0^{(s-1)}$, a joint draw $\gamma^{(s)}, c^{(s)}$ is obtained using a Metropolis step (Lopes and Salazar, 2005; Galvao and Owyang, 2017). The smoothing parameter has a gamma prior and proposal. The threshold has a normal prior and proposal. Both proposals have hyperparameters set to achieve around 30% acceptance rates. Candidate threshold values are constrained so 15% of observations are in each regime.

Estimation II

- 2 Conditional on $\gamma^{(s)}, c^{(s)}, A^{(s-1)}$ and $B_0^{(s-1)}, \Sigma_1^{(s)}$ and $\Sigma_2^{(s)}$ are drawn using inverse-Wishart proposal and priors in a Metropolis step (Galvao and Owyang, 2017). The proposal distribution is $\Sigma_1^{-1} \sim W(C_1^{-1}, pv_1)$ with $pv_1 = pv_0 + \Delta_1 \sum_{t=1}^T I(x_{t-1}^{(s)} \leq c)$ and $C_1 = \Delta_{\Sigma_1} \left[\sum_{t=1}^T e_{1t} e_{1t}' \right]$ where $e_{1t} = (1 - \Pi_t(\gamma^{(s)}, c^{(s)}, x_{t-1}^{(i,s-1)})) \varepsilon_t^{(s-1)}$. There is a similar proposal for Σ_2^{-1} . Hyperparameters Δ_{Σ_1} and Δ_{Σ_2} are set to achieve 30% acceptance rates.
- 3 Conditional on $\Sigma_1^{(s)}, \Sigma_2^{(s)}, \gamma^{(s)}, c^{(s)}$ and $B_0^{(s-1)}, A^{(s)}$ is drawn using the triangularization proposed by Carriero et al (2016b). We use a modification of the Minnesota Normal prior. Set $\lambda_1 = 1$ and $\lambda_2 = 0.5$ (select using likelihood).

Estimation III

- ④ Conditional on $\Sigma_1^{(s)}, \Sigma_2^{(s)}, A^{(s)}$ and $\gamma^{(s)}, c^{(s)}, B_0^{(s)}$ is drawn using a random-walk-metropolis step as in Carriero et al (2016a). Hyperparameter Δ_b is calibrated to achieve rejection rates of around 70%.

Variables and Factors

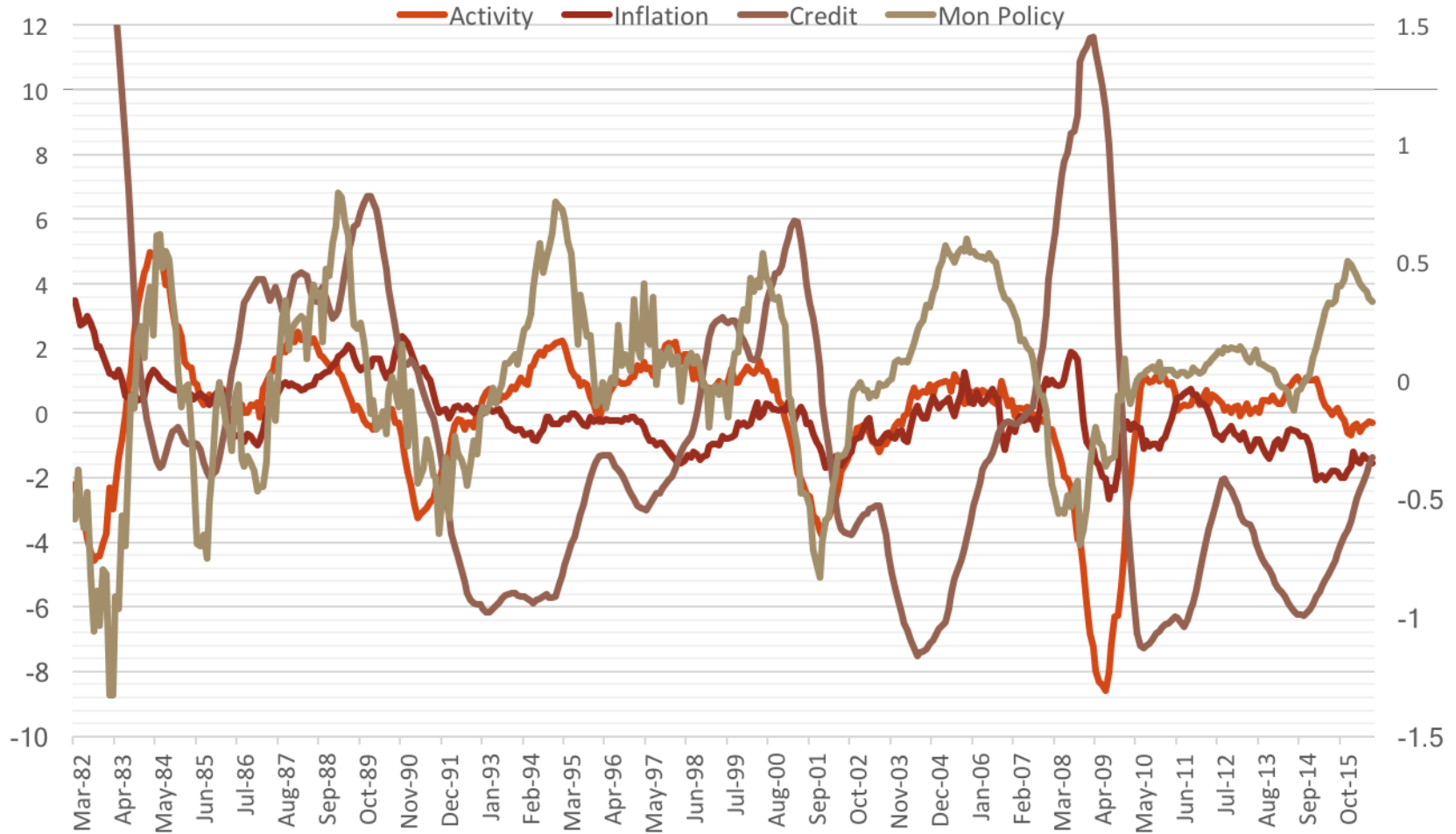
	Factor	Trans.
Employees nonfarm	activity	Log-diff
Avg hourly earnings	activity	Log-diff
Personal income	activity	Log-diff
Consumption	activity	Log-diff
Industrial Production	activity	Log-diff
Capacity utilization	activity	Log-diff
Unemp. Rate	activity	Log-diff
Housing Starts	activity	Log-diff
CPI	inflation	Log-diff
PPI	inflation	Log-diff
PCE deflator	inflation	Log-diff
PPI ex food and energy	inflation	Log-diff
FedFunds + shadow rate	Mon. Pol.	diff
1year_rate	Mon. Pol.	diff
EBP	Credit	levels
BAA spread	Credit	levels
Mortgage Spread	Credit	levels
TED Spread	Credit	levels
CommPaper Spread	Credit	levels
Term Spread (10y-3mo)	Credit	levels

Estimation period:
1982M3-2016M8 (pre-
sample from 1974 for B
RW priors).

Series are standardized.

N=20; p=13;

MAI model: Y on Y Factors



Note: Monetary policy factor in the right axis.

Correlation with MAI Factors

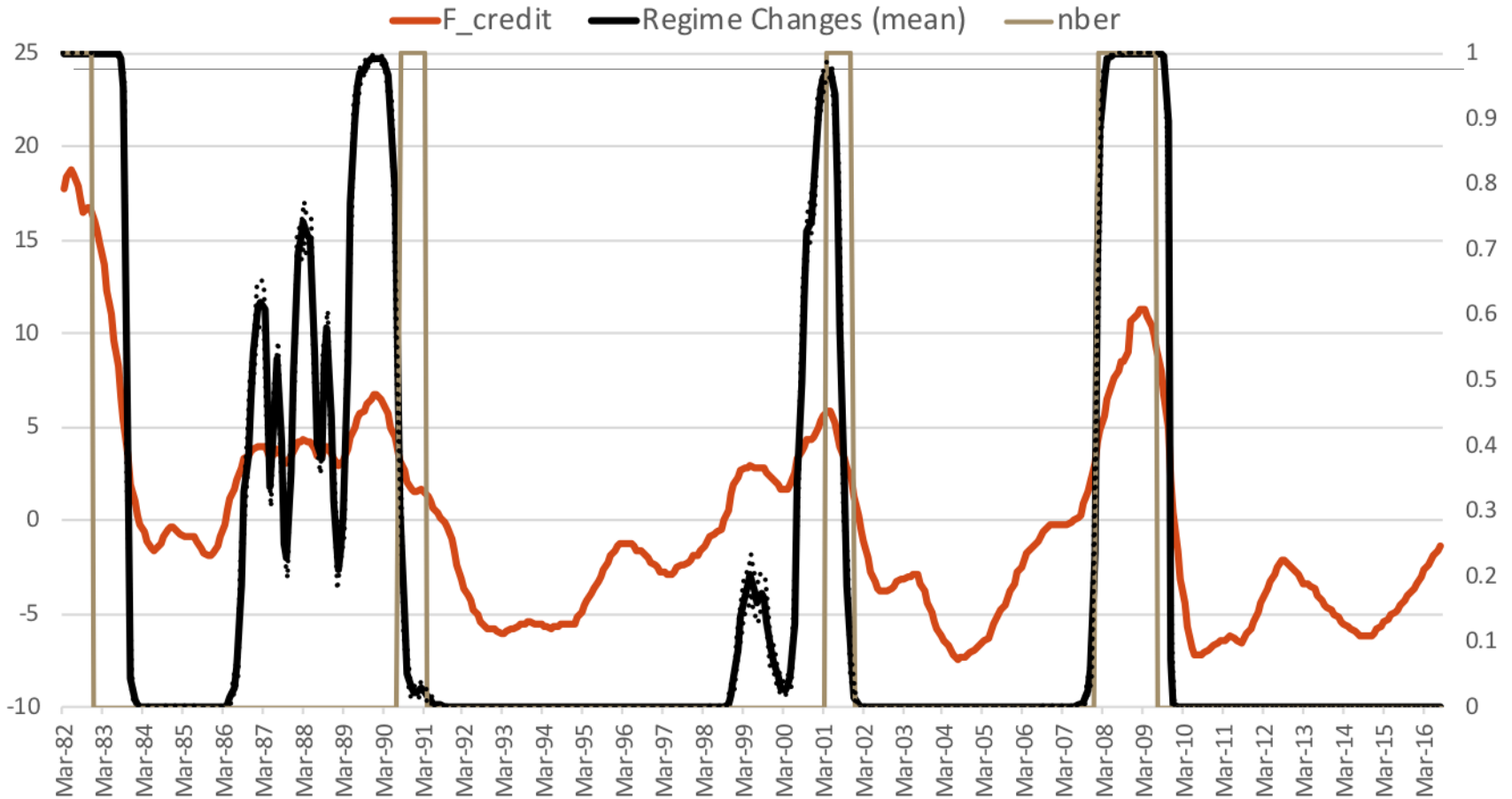
	F_infl	F_mp	F_cred	PhilFed Activity	Chicago FCI	Adjusted CFCI
F_activity	0.06	0.61	-0.47	0.86	-0.39	-0.02
F_inflation	1	-0.13	0.48	-0.11	0.54	0.12
F_mp	-0.13	1	-0.49	0.63	-0.34	-0.07
F_credit	0.48	-0.49	1	-0.51	0.78	0.53

Choosing ST-MAI Specification

	Average Likelihood $E_{\theta}(\ln f(y \theta))$	BIC
ST-MAI with F_activity ($\lambda_1=1; \Delta_{\Sigma}=25/110; \Delta_{\gamma,c}=0.01$)	-7820.760	28271.735
ST-MAI with F_inflation ($\lambda_1=1; \Delta_{\Sigma}=120/20; \Delta_{\gamma,c}=0.01$)	-8004.157	28638.529
ST-MAI with F_mp ($\lambda_1=1; \Delta_{\Sigma}=20/120; \Delta_{\gamma,c}=0.01$)	-7859.639	28349.493
ST-MAI with F_credit ($\lambda_1=1; \Delta_{\Sigma}=120/20; \Delta_{\gamma,c}=0.01$)	-7749.376	28128.967

All with 4 factors. Hyperparameters are chosen to maximise the average likelihood and/or set acceptance rates to about 30%.

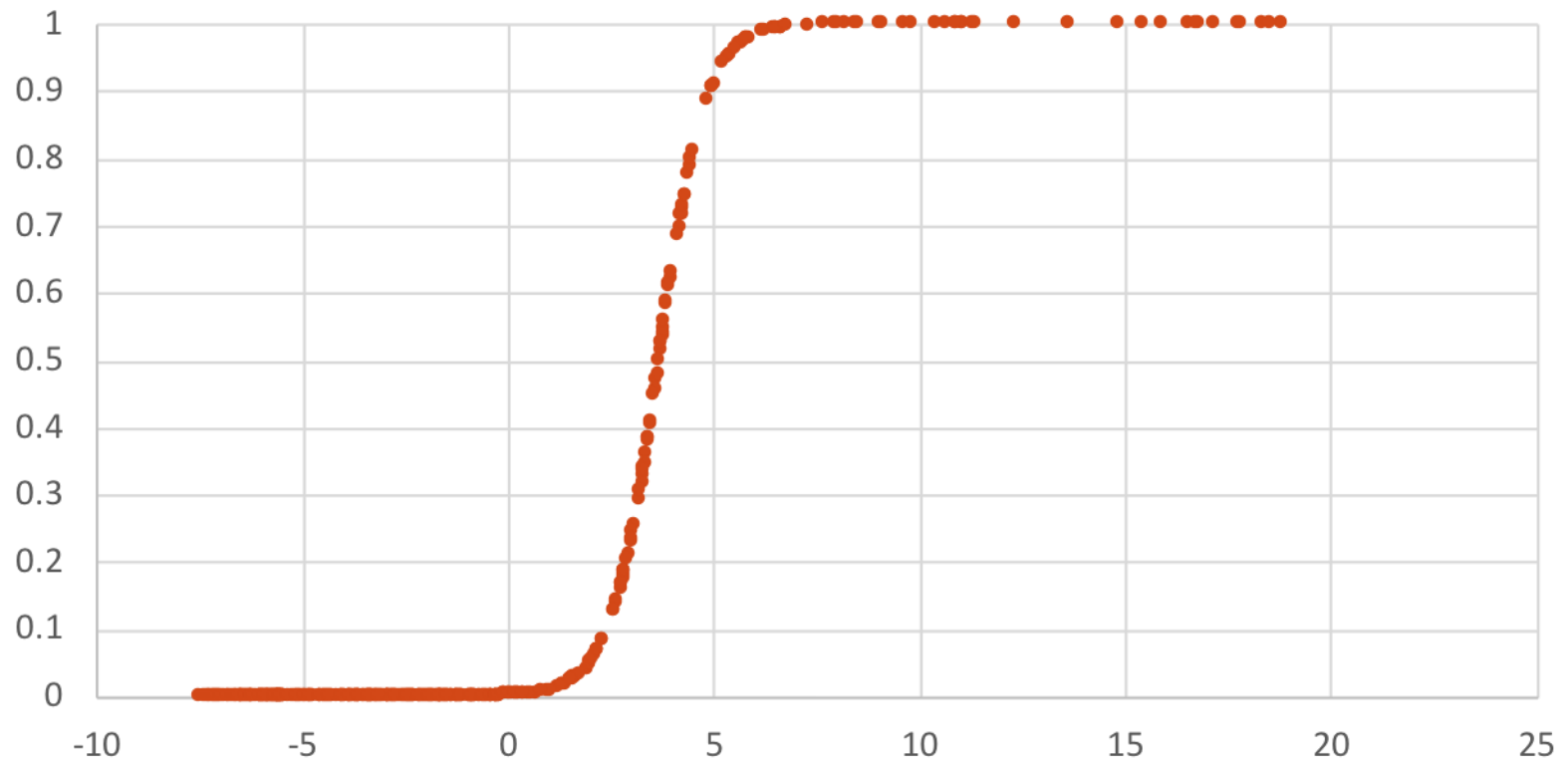
ST-MAI regimes



NBER recessions: greyish line.

Transition Function

ST-MAI transition function at post mean parameters



ST-MAI B_matrix Post. Mean:

	F_activity	F_inflation	F_MonPol	F_credit
Employees nonfarm	1.00			
Avg hourly earnings	0.13			
Personal income	0.06			
Consumption	0.25			
Industrial Production	0.88			
Capacity utilization	0.85			
Unemp. Rate	-0.40			
Housing Starts	0.16			
CPI		1.00		
PPI		-0.09		
PCE deflator		0.52		
PPI ex food and energy		0.35		
FedFunds + shadow rate			1.00	
1year_rate			0.38	
EBP				1.00
BAA spread				0.28
Mortgage Spread				1.44
TED Spread				2.22
CommPaper Spread				2.14
Term Spread (10y-3mo)				-1.90

Computing Responses to Shocks I

- If we multiply the STMH-MAI by B_0 , we get:

$$F_t = B_0 \sum_{u=1}^p A_u F_{t-u} + B_0 \sum_{u=1}^p \Pi_t(\gamma, c, x_{t-1}) D_u F_{t-u} + u_t,$$

with

$$u_t = B_0 \varepsilon_t, \quad \text{var}(u_t) = \Omega_t = B_0 \Sigma_t B_0'.$$

- A small set of common shocks drives the dynamics of the system.

Computing Responses to Shocks II

- The effect of the r^{th} common shock on Y at the impact in regime 1 is (as in Carriero et al, 2016):

$$v_1^{(r)} = \Sigma_1 B_0' P_{1,(r)}^{-1'}$$

where $P_{1,(r)}^{-1'}$ refers to the column of shock r in the matrix $P_1^{-1'}$ ($r = 1, \dots, R$) obtained via Cholesky decomposition as $\Omega_1 = B_0 \Sigma_1 B_0' = P_1 P_1'$. Equivalently, for regime 2 at impact:

$$v_2^{(r)} = \Sigma_2 B_0' P_{2,(r)}^{-1'}$$

Computing Responses to Shocks III

- The responses of Y to $v^{(r)}$ at horizon h conditional on the history at t are:

$$\begin{aligned} GR_{h,r,t} &= E[Y_{t+h}|I_t, v^{(r)}; \Sigma_{t+h}|I_t, v^{(r)}; A, B_0, \gamma, c] \\ &\quad - E[Y_{t+h}|I_t; \Sigma_{t+h}|I_t; A, B_0, \gamma, c], \end{aligned}$$

where $I_t = (Y'_t, \dots, Y'_{t-p+1})'$ and $A = (A_1 \dots A_p, D_1 \dots D_p)'$.

- We use draws as

$$\begin{aligned} \varepsilon_{t+h}^{(k)} &\sim N(0, \Sigma_{t+h}^{(k)}) \\ \Sigma_{t+h}^{(k)} &= (1 - \Pi_{t+h}(\gamma, c, x_{t+h-1}^{(k)}))\Sigma_1 + \Pi_{t+h}(\gamma, c, x_{t+h-1}^{(k)})\Sigma_2. \end{aligned}$$

where $k = 1, \dots, K$, to compute both conditional expectations.

Computing Responses to Shocks IV

- In practice, we split the time periods between two regimes ($\Pi_t(\gamma, c, x_{t-1}) \geq 0.5$ is the upper regime) to compute regime-dependent responses while allowing for regime-switching after the shock:

$$GR_{h,r}^{reg1} = 1/T_1 \sum_{t=1}^{T_1} GR_{h,r,t}^{(reg1)}(v_1^{(r)})$$
$$GR_{h,r}^{reg2} = 1/T_2 \sum_{t=1}^{T_2} GR_{h,r,t}^{(reg2)}(v_2^{(r)})$$

- We also need to consider parameter uncertainty.

Computing Responses to Shocks V

- Complete algorithm to compute regime-conditional responses:
 - 1 Draw a set of parameters – $A^{(j)}, B_0^{(j)}, \Sigma^{(j)}, \gamma^{(j)}, c^{(j)}$ – from saved posterior distribution draws.
 - 2 Using $\Pi_t(\gamma^{(j)}, c^{(j)}, x_{t-1}^{(j)})$, define the sets $I^{(reg1)}$ and $I^{(reg2)}$.
 - 3 Using $A^{(j)}, B_0^{(j)}, \Sigma^{(j)}, \gamma^{(j)}, c^{(j)}, I^{(reg1)}$ and $v_1^{(r)}$, select $t = 1$ (a history from $I^{(reg1)}$) to compute a set of K paths for $h = 1, \dots, H$ with and without the impact of $v_1^{(r)}$ by simulating the system with draws from $\varepsilon_{t+h}^{(k)} \sim N(0, \Sigma_{t+h}^{(k)})$. By averaging over the K paths, compute $GR_{h,r,t=1}^{(reg1)}$. Then repeat for $t = 2, \dots, t = T_1$. Finally, compute $GR_{h,r}^{reg1}$ by averaging over saved $GR_{h,r,t}^{(reg1)}$.
 - 4 Using $A^{(j)}, B_0^{(j)}, \Sigma^{(j)}, \gamma^{(j)}, c^{(j)}, I^{(reg2)}$ and $v_2^{(r)}$, follow the algorithm in (3) using $I^{(reg2)}$ to obtain $GR_{h,r}^{reg2}$.

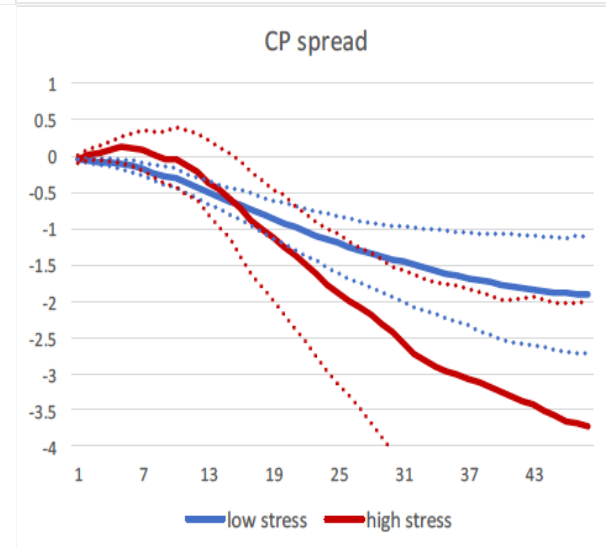
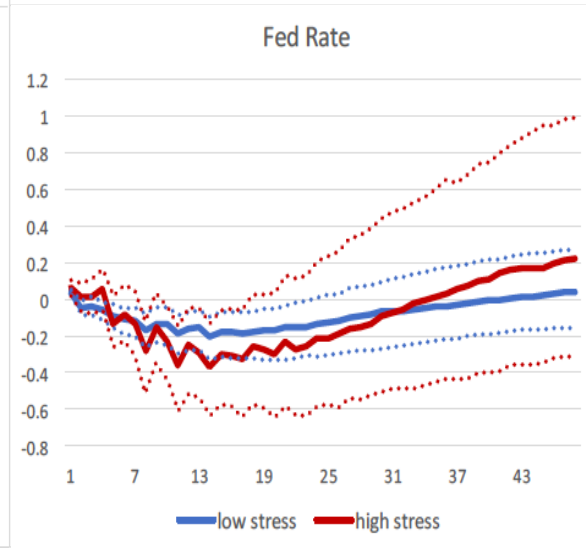
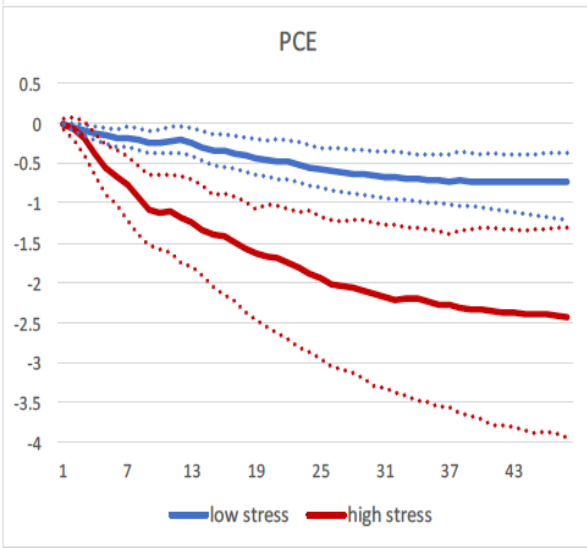
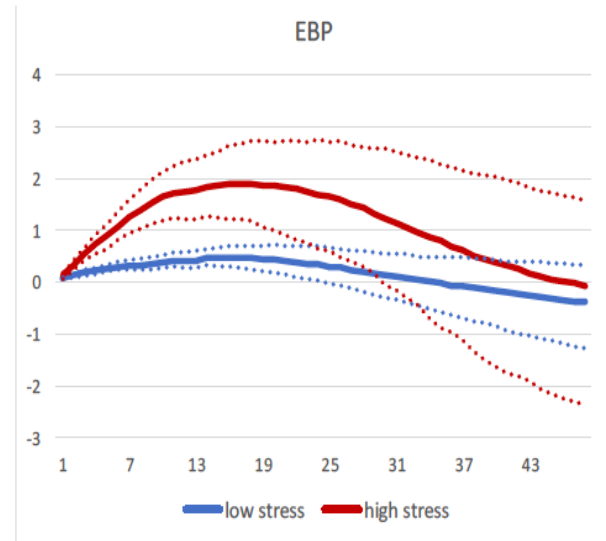
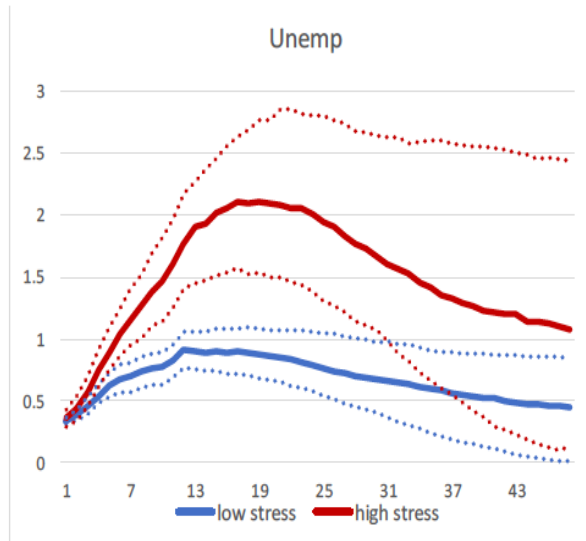
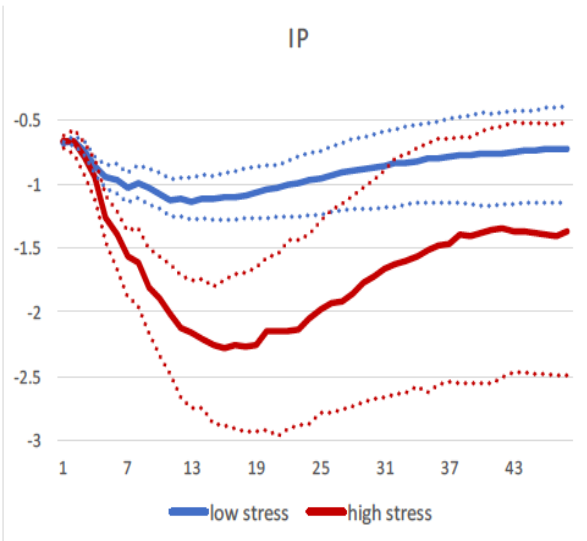
Computing Responses to Shocks VI

- Repeat 1-4 for $j = 1, \dots, J$.
- Use $GR_{h,r}^{reg1,(j)}$ and $GR_{h,r}^{reg2,(j)}$ for $j = 1, \dots, J$ to compute the median response and 68% confidence intervals conditional on each regime for $h = 1, \dots, H$.

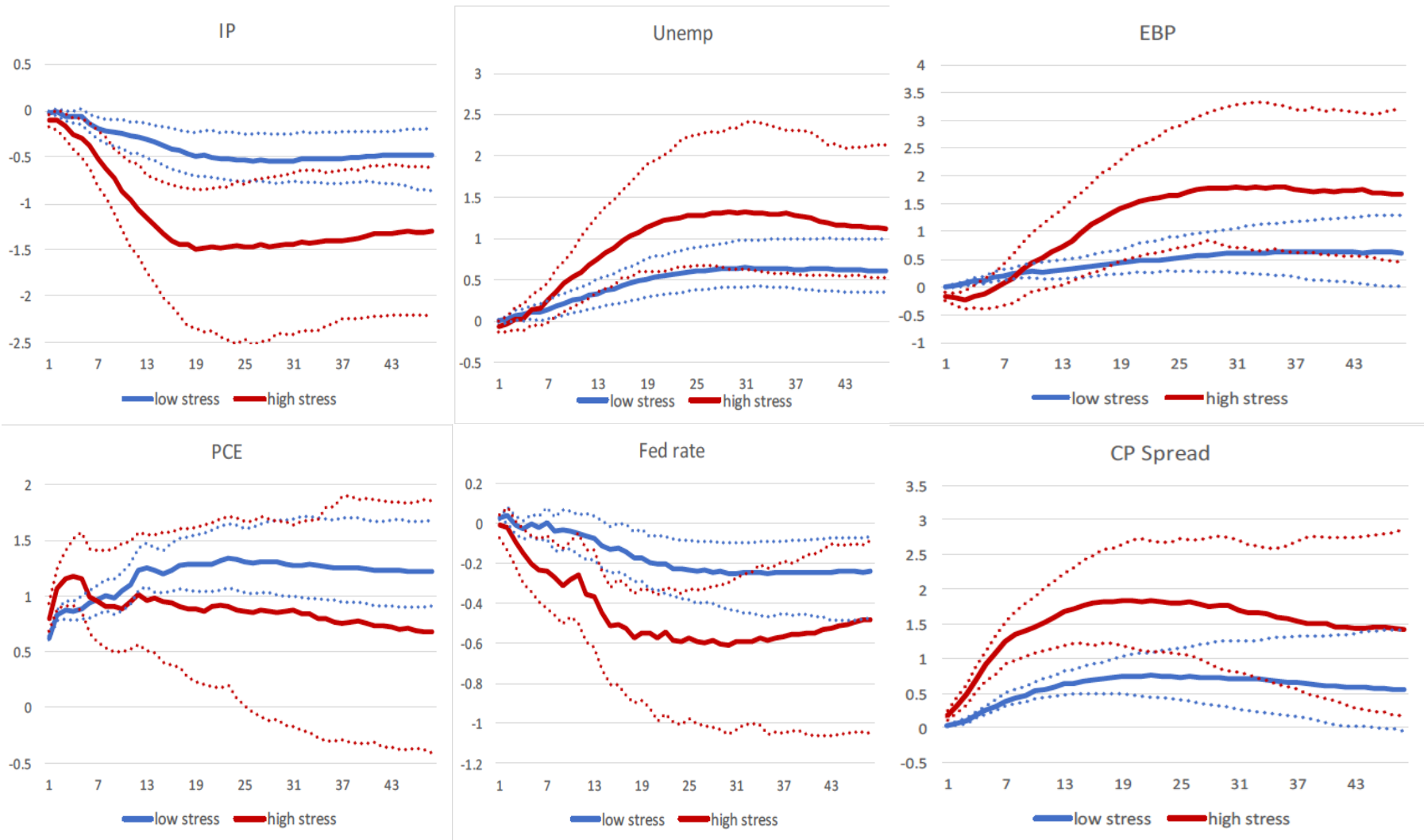
Responses computed for:

- Four structural common shocks.
- Negative shocks on economic activity:
 - Weak-demand (consumer and business lack of confidence, for example).
 - Price-pressure (a supply-type shock).
 - Monetary policy tightening.
 - Credit Stress (deterioration of credit conditions).
- Plots for key variables: Industrial Production, Unemployment, PCE inflation, EBP, Fed Rate, CP spread.
- All include 68% confidence bands. Cumulative responses.

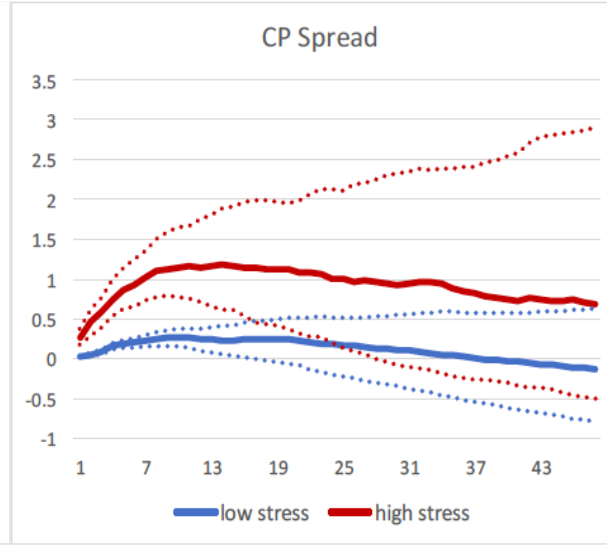
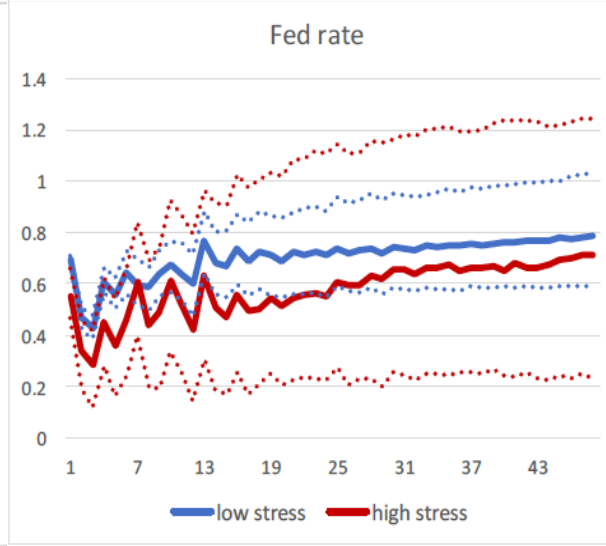
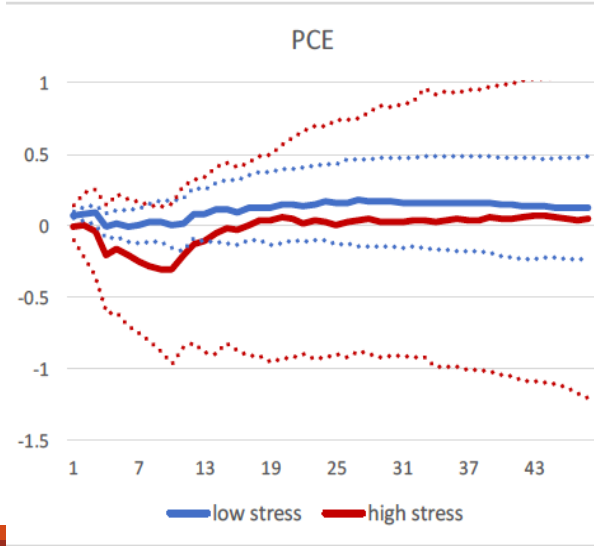
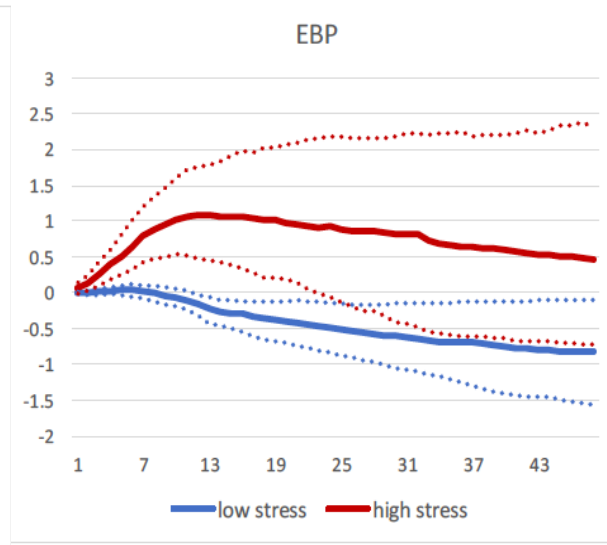
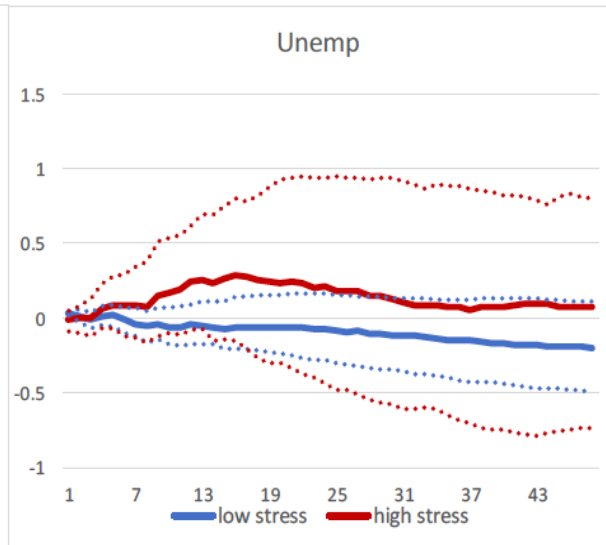
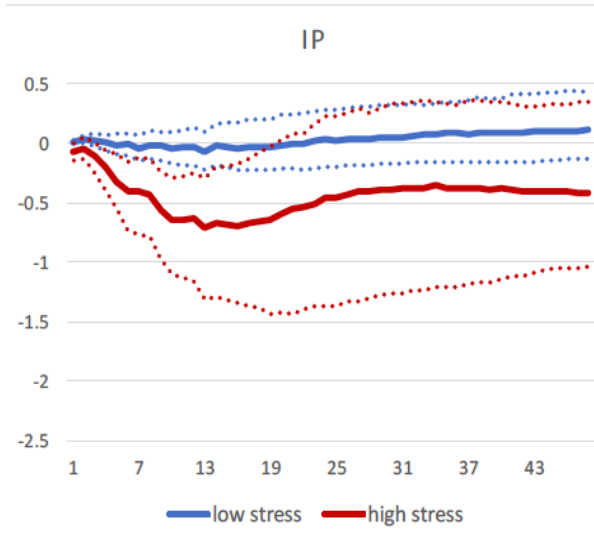
Responses to a Demand Shock



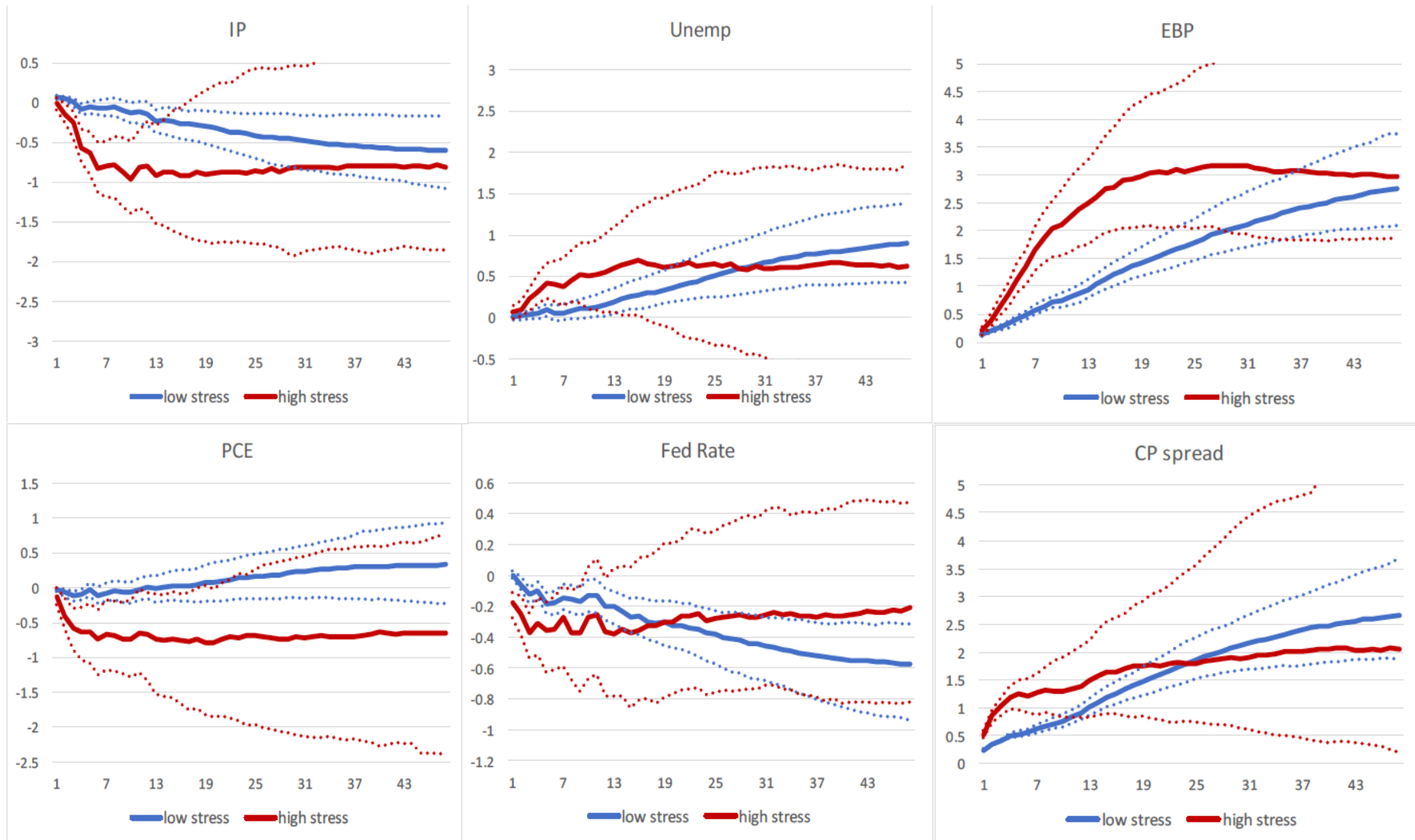
Responses to a Supply Shock



Responses to a MP shock



Responses to a Credit Shock



Probability of Staying at the Regime at t after 12 months

Regime at time of the shock:	Low Stress Regime		High Stress Regime	
	Positive shocks			
Type of shock:	Small (v_1)	Large ($2v_1$)	Small (v_2)	Large ($2v_2$)
Demand (activity) shock	0.96	0.96	0.70	0.69
Supply (price) shock	0.95	0.95	0.74	0.77
Monetary policy shock	0.95	0.95	0.74	0.77
Credit (spread) shock	0.94	0.93	0.77	0.82
	Negative shocks			
	Small ($-v_1$)	Large ($-2v_1$)	Small ($-v_2$)	Large ($-2v_2$)
Demand (activity) shock	0.96	0.96	0.72	0.72
Supply (price) shock	0.96	0.97	0.67	0.64
Monetary policy shock	0.96	0.96	0.67	0.64
Credit (spread) shock	0.97	0.98	0.64	0.58

Computed using parameters at the posterior mean.

Asymmetries from the Sign/Size of the Shock II

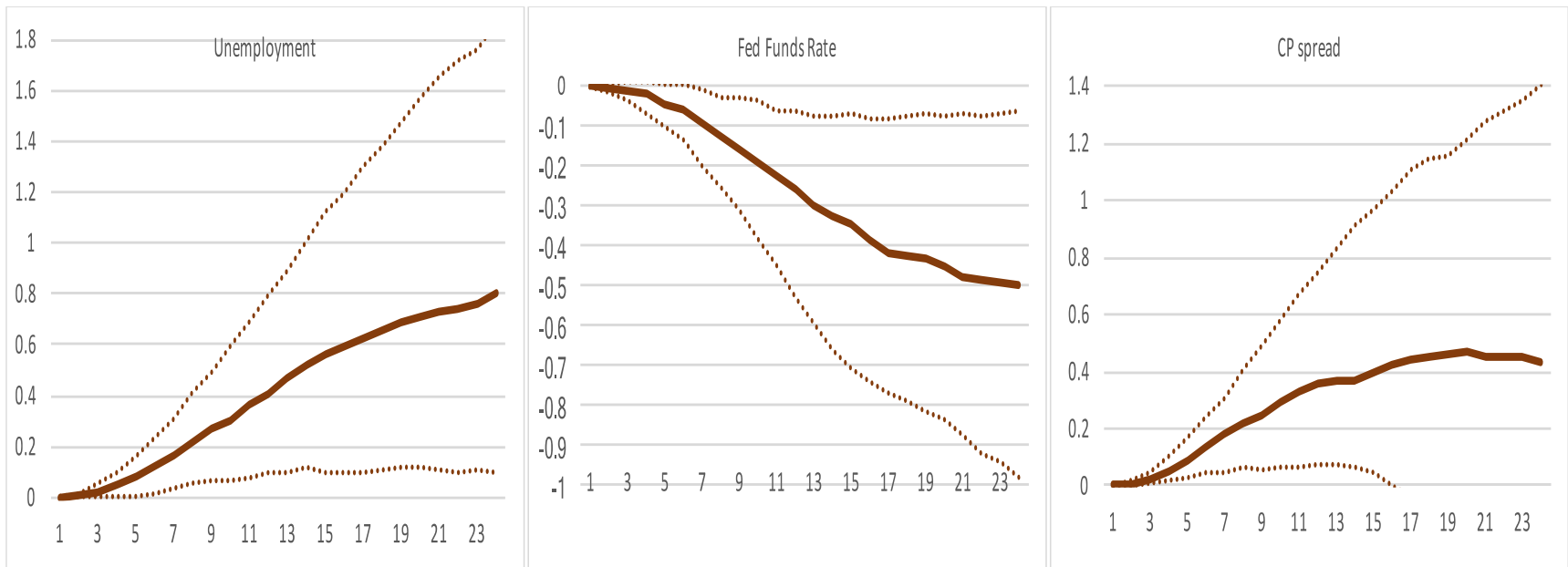
- We measure asymmetries due to size of the shock using

$$ASY_{h,r}^{ls(reg1)} = 1/T_1 \sum_{t=1}^{T_1} \left[GR_{h,r,t}^{(reg1)}(2v_1^{(r)}) - 2 * GR_{h,r,t}^{(reg1)}(v_1^{(r)}) \right]$$
$$ASY_{h,r}^{ls(reg2)} = 1/T_2 \sum_{t=1}^{T_2} \left[GR_{h,r,t}^{(reg2)}(2v_2^{(r)}) - 2 * GR_{h,r,t}^{(reg2)}(v_2^{(r)}) \right].$$

If large shocks have different effects from small shocks we expect that either $ASY_{h,r}^{ls(reg1)}$ or $ASY_{h,r}^{ls(reg2)}$ will be nonzero for a set of horizons and shocks. We again use 68% bands to assess this.

Size Effects: $GR(2v)-2GR(v)$

The effect of Credit shocks (similar for Supply and MP shocks):



Large shocks have disproportionate stronger effects than small shocks.

Asymmetries from the Sign/Size of the Shock I

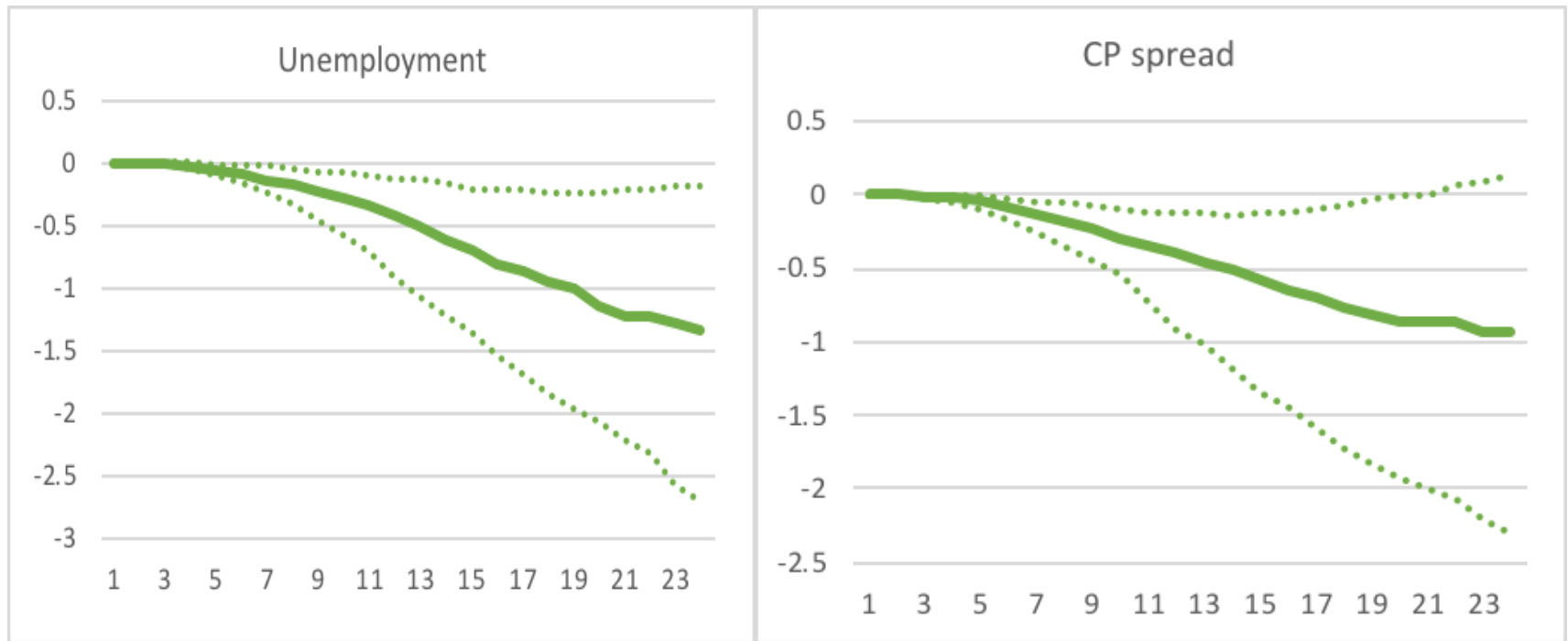
- We measure asymmetries due to the sign of the shock using

$$ASY_{h,r}^{+-(\text{reg1})} = 1/T_1 \sum_{t=1}^{T_1} \left[GR_{h,r,t}^{(\text{reg1})}(v_1^{(r)}) + GR_{h,r,t}^{(\text{reg1})}(-v_1^{(r)}) \right]$$

$$ASY_{h,r}^{+-(\text{reg2})} = 1/T_2 \sum_{t=1}^{T_2} \left[GR_{h,r,t}^{(\text{reg2})}(v_2^{(r)}) + GR_{h,r,t}^{(\text{reg2})}(-v_2^{(r)}) \right].$$

We use 68% bands to assess whether either $ASY_{h,r}^{+-(\text{reg1})}$ or $ASY_{h,r}^{+-(\text{reg2})}$ are nonzero.

Sign Effects: $GR(2v)+GR(-2v)$



Good shocks have disproportionate beneficial effects in unemployment. Good shocks: disinflationary shocks (as picture), loosening of MP stance, decrease in credit spreads.

Conclusions I

- Smooth Transition MAI models are an effective new tool to find empirical evidence of amplification effects and asymmetries in responses to shocks when considering a large set of endogenous variables.

Conclusions II

- Credit conditions drive regime-switching dynamics in a set of 20 economic and financial variables.
- During high credit stress regimes, the effect of some structural shocks are amplified; positive and negative shocks may have asymmetric effects; and large shocks may have disproportionate effects to small shocks.
- The duration of financial fragility episodes depends crucially on the type, size and sign of the shocks hitting the economy. Episodes can be shorter if large good shocks hit the economy (including loosening the monetary policy stance).

Additional Empirical Exercises I

- We change the order between F_{mp} and F_{credit} when computing responses: no major change in responses to credit and MP shocks.
- We compute responses using a small STVAR of IP, Unem, CPI, FFR (shd), EBP: activity and monetary policy shocks imply qualitatively different responses.